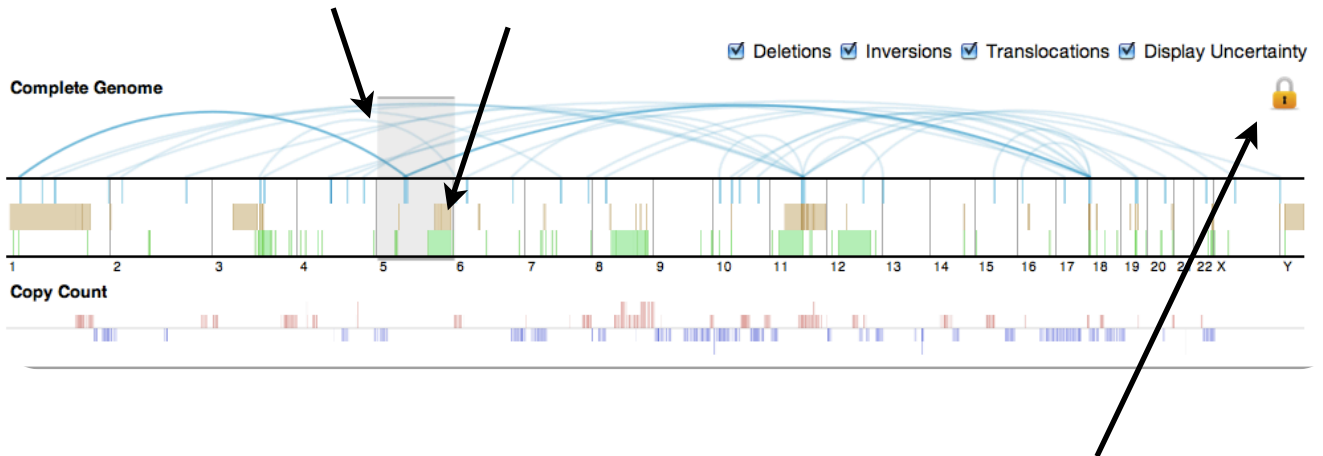
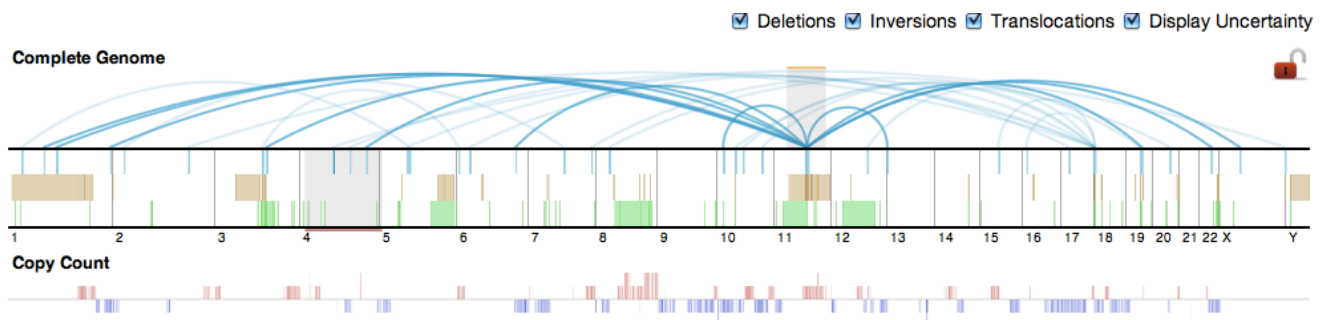


## Gremlin Interaction Guide

Two region-of-interest selection windows are provided in the Complete Genome View. Each can be resized and translated along the genome using left click and drag. These selection windows are linked by default.

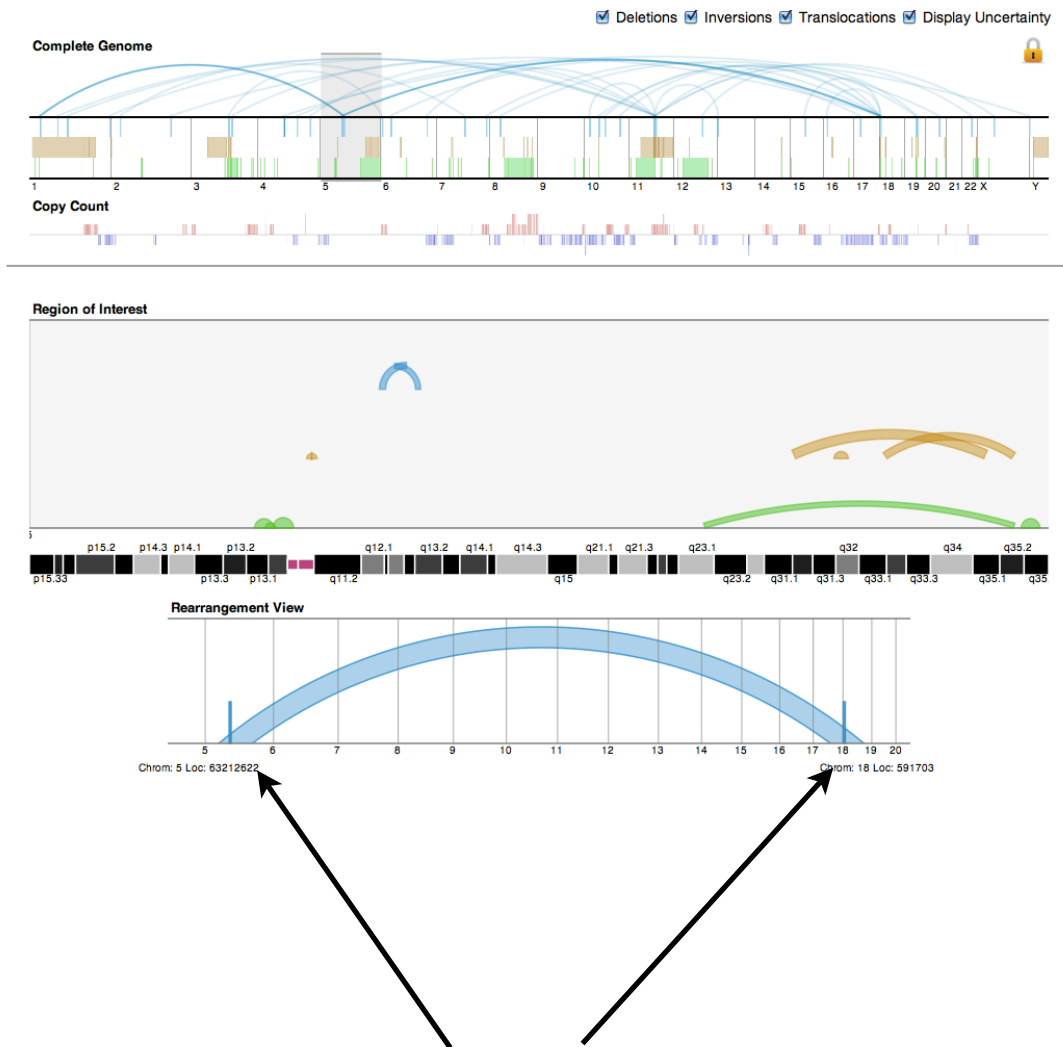


The lock icon indicates that the selection windows are linked. Double clicking the icon or anyplace in the Complete Genome view will toggle the views being linked/unlinked. When unlinked, the lock icon will change, and different colored bars attached to the selection windows will appear, as shown below.



**Keyboard controls:** The selection windows may also be controlled using the arrow keys. Pressing up or down will automatically fit the selection to the current chromosome's beginning and ending locations. Pressing left or right will snap the selection to the previous or next chromosome, respectively.

The selection window in the Complete Genome View populates the Region of Interest View, providing a sense of continuous zooming. By clicking on a rearrangement glyph in the ROI View, the Rearrangement View will display only the selected rearrangement.



Clicking on either end of the rearrangement in the Rearrangement View will open a link to the UCSC Human Genome Browser, positioned at the appropriate indels in the February 2009 human genome.